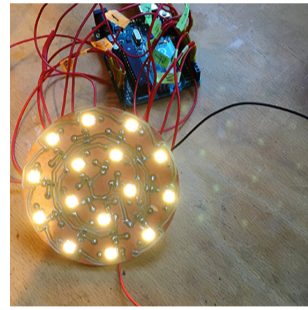
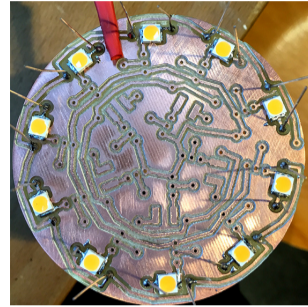
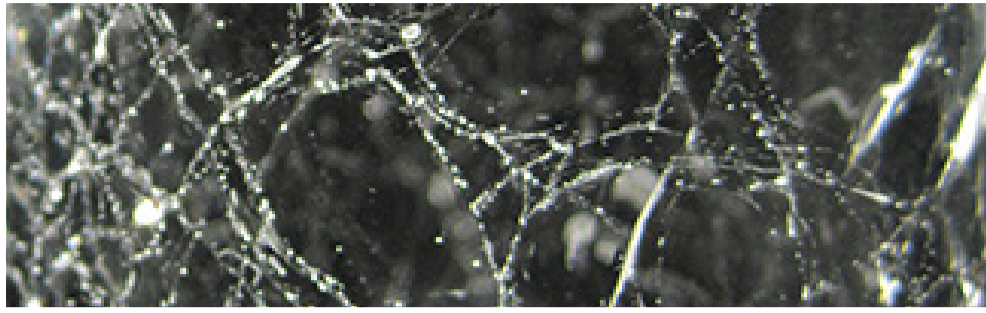




# Cracking

Ying Li





### Cracking

Cracking is a table lamp. Its shade is produced in craquelé glass, an old technique to achieve a visually interesting effect, a texture consisting of countless tiny cracks in the glass. LED lights controlled by a micro controller allow for illumination of the glass shade from different angles. Thus, an ever changing interplay of light and shadow occurs.