



**Light as a companion**

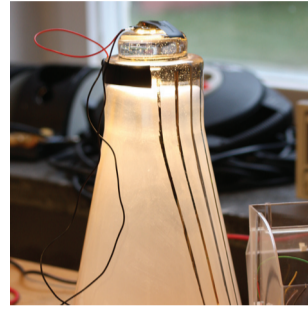
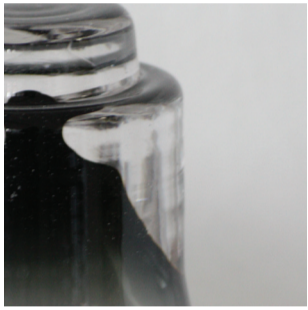
A play with the transparency of glass and alternatives to interact with light.

# POL

Laura Görs



**Pol** - engl. = Pole, magnetic field, either of the two regions or parts of an electric battery, magnet; a point of concentration of interest, attention; a geographical position



Electricity is conducted by two golden lines that are painted on the glass surface. The electric circuit is visible and was intentionally used as an element of design.



### Idea

Light that seems to come out of nowhere and becomes visible in the inside. The aesthetic of glass and light depends on each other, both seem to be colourless and invisible. This project uses both materials to emphasize their individual properties.

Pol can be activated with a magnetic, personal object. Therefore the object has to be put on the luminaire, this creates an electric contact and the circuit is closed - Pol lights up. If you want to go somewhere else take the object (and thereby the light) with you and create an active room somewhere else in your home.

